



**Kingdom**

FLOW CONTROL CO., LTD.

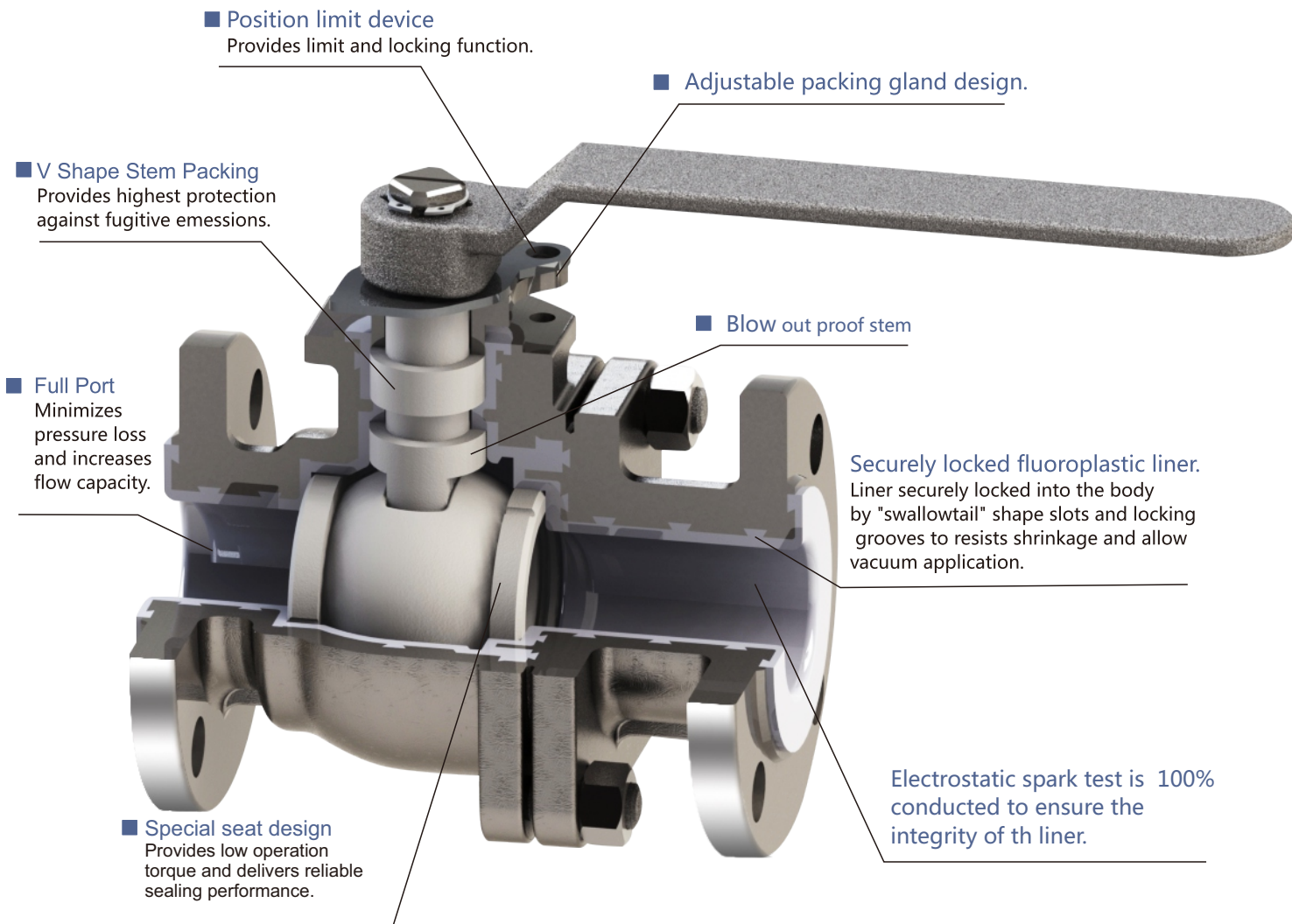


**Lined Ball Valves**

## Product features

The fluorine lined ball valve is made with specially crafted molds to ensure a delicate surface for perfect sealing. The V-shaped PTFE stem packing assembly assures zero leakage of valves. Full fluorine plastic lining technology is applied for strong corrosive mediums.

Both the inner chamber and the ball are made using high-pressure injection molding with corrosion-resistant and ageing-resistant PFA lining for reliable anti-corrosion and sealing performance. The fluorine lined ball valve is suitable for use by the petrochemical, chemical engineering, food processing, and pharmaceutical industries to block strongly corrosive mediums, such as acid and alkaline, in the production process.



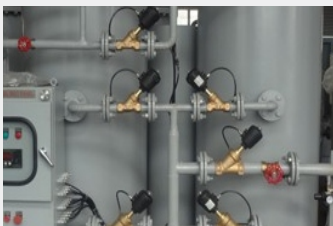
## Applicability in Process Control



Petrochemical



Chemical

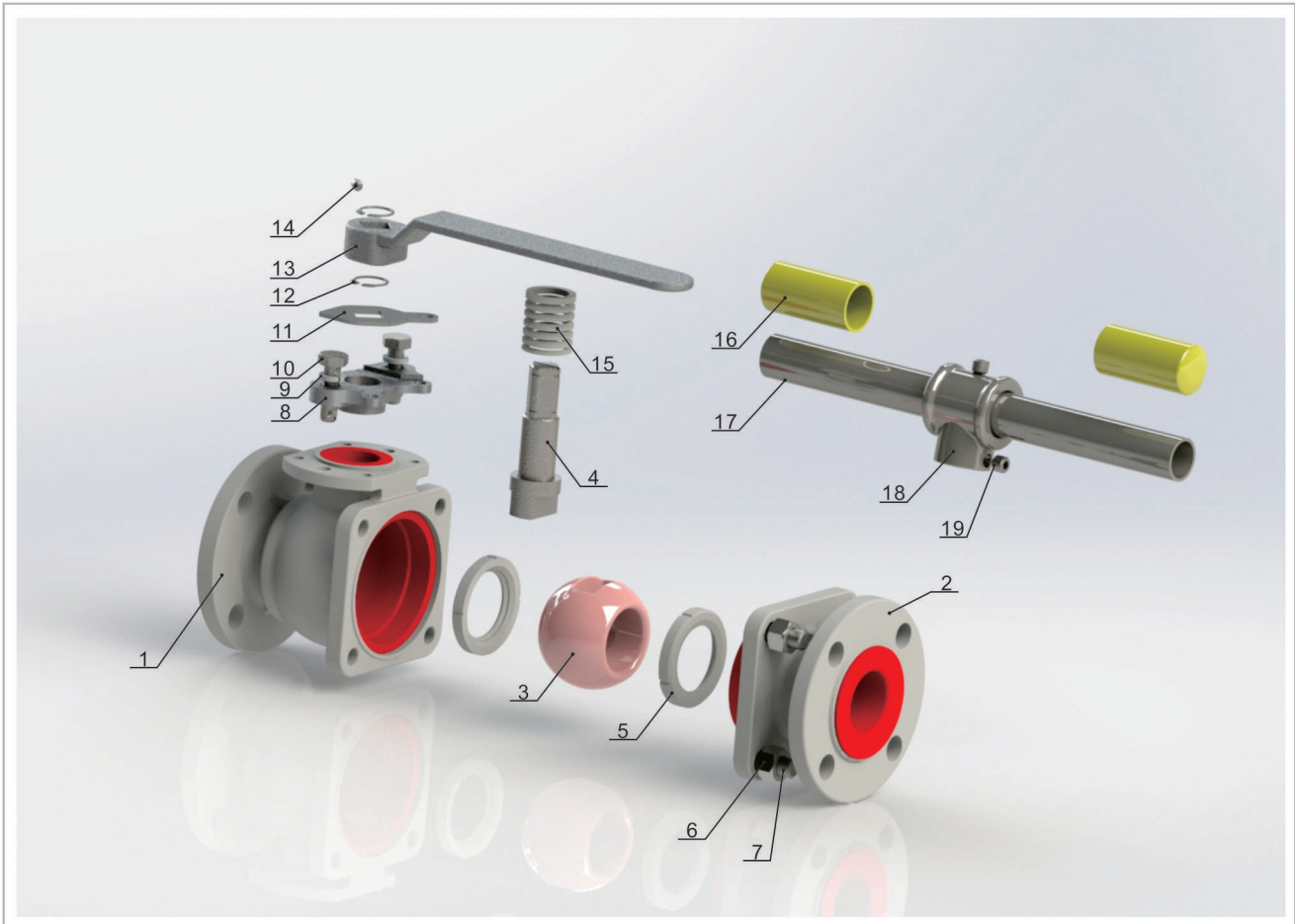


Food



Pharmaceutical

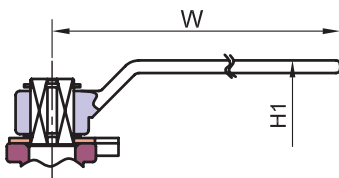
## Material of Construction



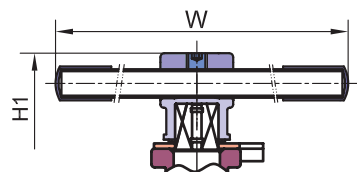
NO.	PART	MATERIAL		
		1.4408/CF8M+PFA	1.4308/CF8+PFA	1.0619/WCB+PFA
1	Body	1.4408/CF8M+PFA	1.4308/CF8+PFA	1.0619/WCB+PFA
2	End Cap	1.4408/CF8M+PFA	1.4308/CF8+PFA	1.0619/WCB+PFA
3	Ball	1.4408/CF8M / +PFA*	1.4308/CF8 / +PFA*	
4	Stem	1.4408/F316+PFA	1.4308/F304+PFA	
5	Ball Seat	PTFE		
6	Bolt Nut	A194-8/A2-70		A194-2H/8
7	Bolting	A193-B8/A2-70		A193-B7/8.8
8	Gland	CF8		
9	Flat washer	304		
10	Hex bolt	A2-70		
11	Triangle Stopper	304		
12	Snap Ring	304		
13	Handle ( DN15-DN50)	CF8		
14	Binding Screw ( DN15-DN50)	A2-70		
15	Stem Packing	PTFE		
16	Handle Sleeve ( DN65-DN100)	VINYL PLASTIC		
17	Steel pipe ( DN65-DN100)	A53+PLATED Zn		
18	Handle Adapter ( DN65-DN100)	CF8		
19	Binding Screw ( DN65-DN100)	A2-70		

Note: \*DN15 (1/2") and DN20(3/4") Valve ball is made of PFA

- Design Standard : EN12516-1
- Pressure Rating : PN16
- Wall Thickness : EN12516-1
- Face to Face : EN558 series1
- Flanged Ends : EN1092-1
- Inspection & Testing : EN12266-1

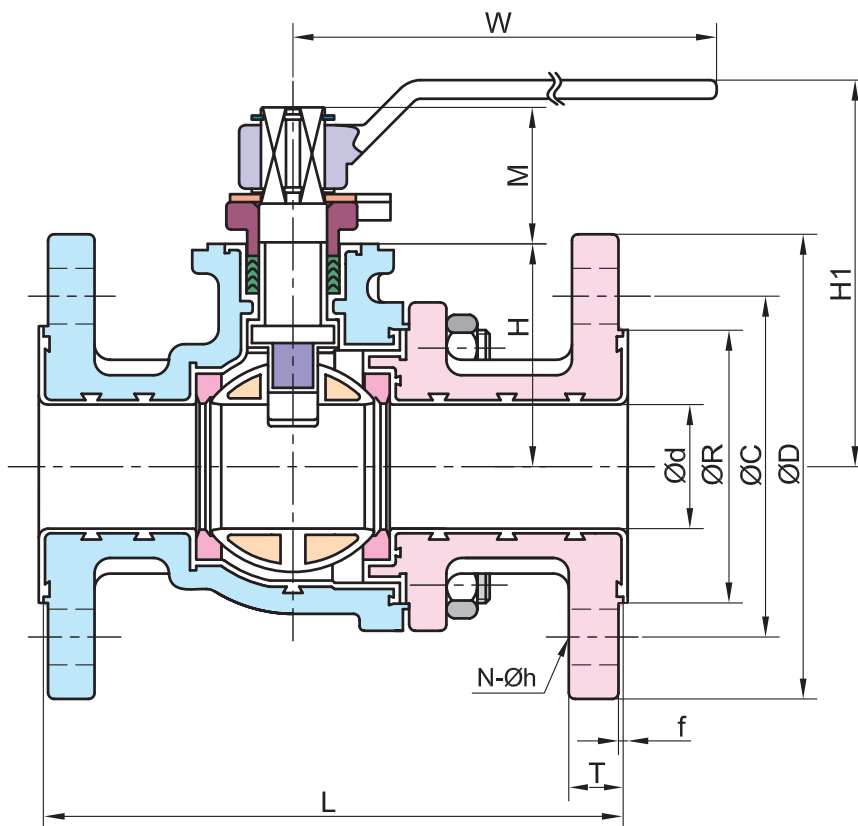
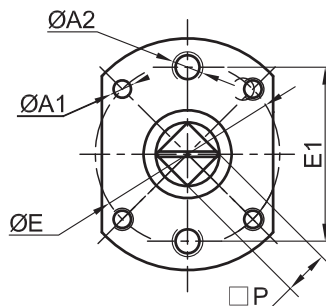
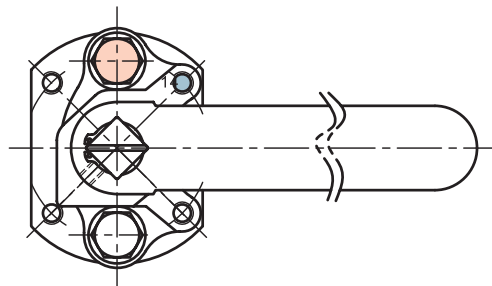


SIZE:DN25 ~ DN50



SIZE:DN65 ~ DN100

ISO5211



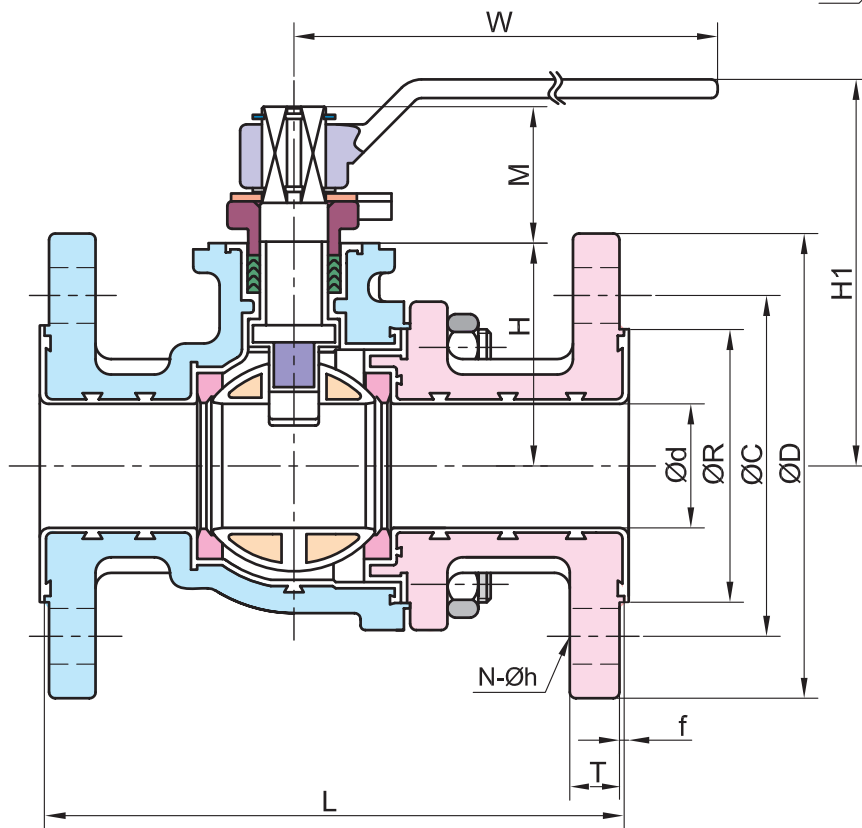
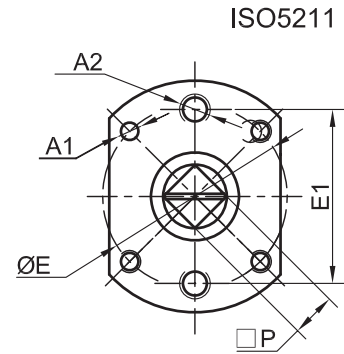
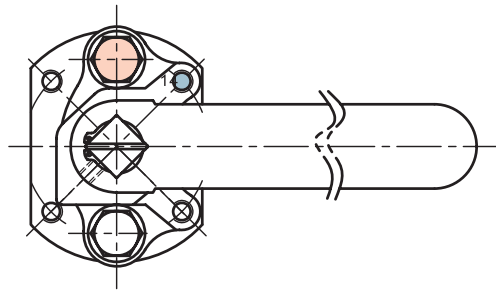
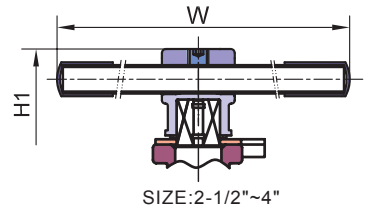
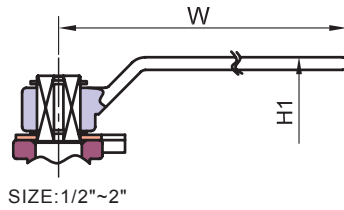
■ DIN PN16

Unit:mm

SIZE	Ød	ØR	ØC	ØD	L	T	f	N	Øh	H	H1	M	W	P	ØE	E1	A1	A2	ISO5211
DN15	15	45	65	95	130	16	2	4	14	39	81.5	20	130	9	42	42	M5	M8	F04
DN20	20	58	75	105	150	18	2	4	14	46	92	26.5	140	11	50	50	M6	M8	F05
DN25	25	68	85	115	160	18	2	4	14	48	96.5	29	170	14	50	50	M6	M8	F05
DN32	32	78	100	140	180	18	2	4	18	55.5	103.5	29	170	14	50	50	M6	M8	F05
DN40	38	88	110	150	200	18	2	4	18	70	123	44	230	17	70	66	M8	M10	F07
DN50	50	102	125	165	230	18	2	4	18	76	129	44	230	17	70	66	M8	M10	F07
DN65	64	122	145	185	290	18	2	8	18	104	191	45.5	300	17	102	75	M10	M12	F10
DN80	76	138	160	200	310	20	2	8	18	119	215	50.5	400	22	102	75	M10	M12	F10
DN100	100	158	180	220	350	20	2	8	18	136	235	56	400	27	102	102	M10	M12	F10



- Design Standard : ASME B16.34
- Pressure Rating : CLASS 150
- Wall Thickness : ASME B16.34
- Face to Face : ASME B16.10
- Flanged Ends : ASME B16.5
- Inspection & Testing : API 598

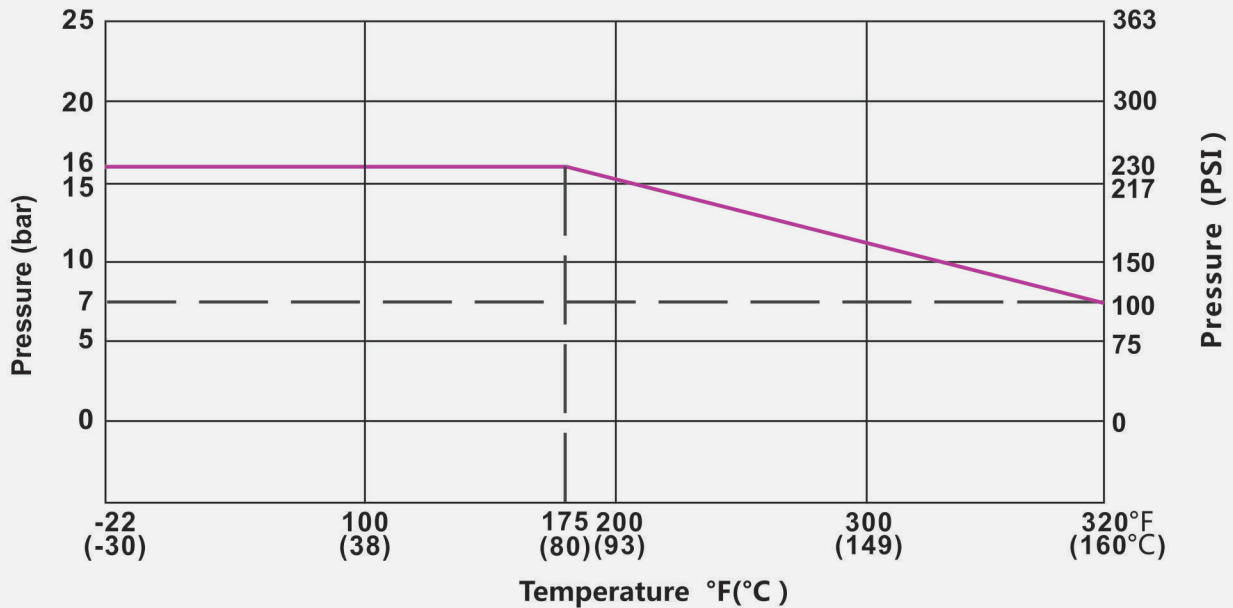


■ ASME CLASS 150

Unit:mm

SIZE	Ød	L	ØR	ØC	ØD	f	T	N	Øh	H	H1	M	W	P	A1	A2	E	E1	ISO5211
1/2"	15	108	35	60.3	90	2	8	4	1/2-13UNC	39	81.5	20	130	9	M5	M8	42	42	F04
3/4"	20	117	43	69.9	100	2	8.9	4	1/2-13UNC	46	92	26.5	140	11	M6	M8	50	50	F05
1"	25	127	51	79.4	110	2	9.6	4	16	48	96.5	29	170	14	M6	M8	50	50	F05
1 1/2"	38	165	73	98.4	125	2	12.7	4	16	70	123	44	230	17	M8	M10	70	66	F07
2"	50	178	92	120.7	150	2	14.3	4	19	76	129	44	230	17	M8	M10	70	66	F07
2 1/2"	64	190	104.8	139.7	180	2	16	4	19	104	191	45.5	300	22	M10	M12	102	75	F10
3"	76	203	127	152.4	190	2	17.5	4	19	119	215	50.5	400	22	M10	M12	102	75	F10
4"	100	229	157.2	190.5	230	2	22.3	8	19	136	235	56	400	27	M10	M12	102	102	F10

## Pressure-Temperature Chart



## Cv Value

Size	1/2	3/4	1	1 1/4	1 1/2	2	2 1/2	3	4
Cv Value	24	35	57	95	200	310	513	800	1650

## Torque Figure

Size		DN15	DN20	DN25	DN32	DN40	DN50	DN65	DN80	DN100
Differential Pressure	0.5MPa	6	8	12	16	20	30	60	70	100
	1.6MPa	6	8	12	20	24	35	65	80	110

Unit: Nm

### Remarks:

For actuator sizing, a safety factor of minimum 30% is recommended.

### Headquarters (International Dept.)

14F-4, 120, Jhongjheng 1st Rd., Kaohsiung 80284, Taiwan  
 Tel: +886-7-7713121 Fax: +886-7-7235165  
 E-mail: sales@kifc.com

### Zhongshan Factory

23-1, Nan-hou West Rd., Nan-tou Zhongshan City, Guangdong 528427, China  
 Tel: +86-760-23132179 23116839 Fax: +86-760-23110582

### Fujian Factory

Hengshan Industrial Park, Huangtian Town,  
 Gutian County, Fujian 352251, China  
 Tel: +86-593-3761598 Fax: +86-593-3762688

