

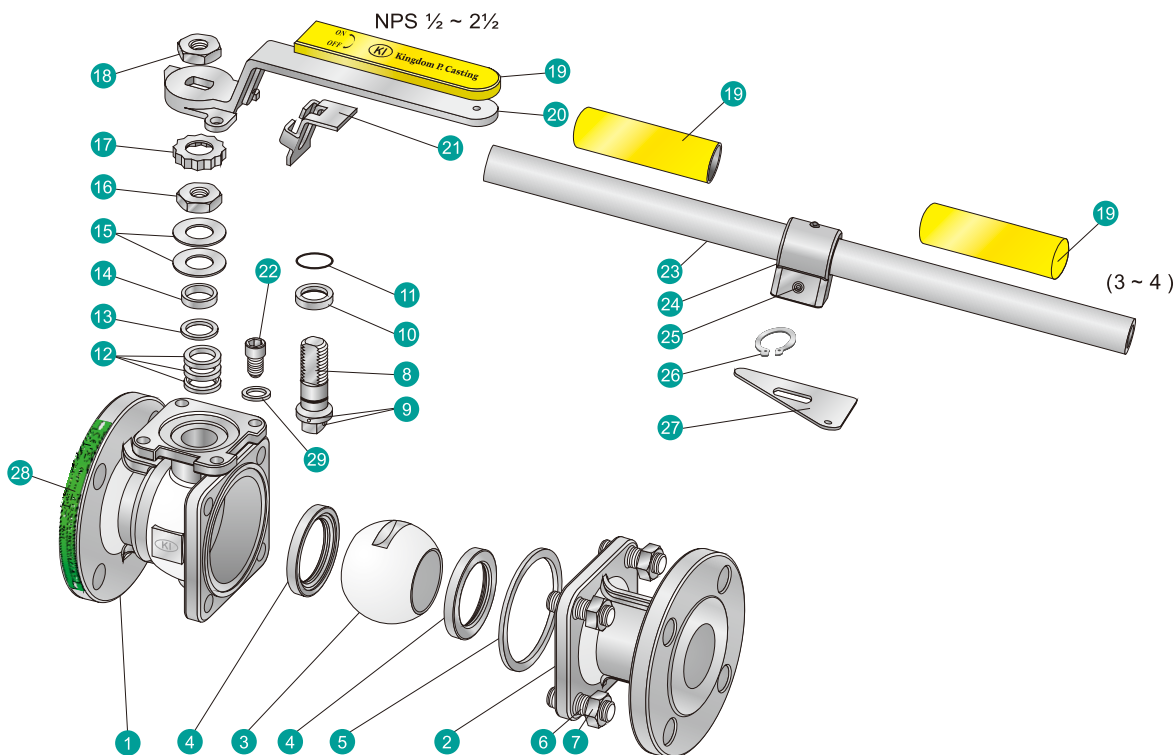
Bracket Mount Type Split Body Flanged Ball Valve

KV-040 / KV-060 SERIES

Standard	ANSI/ASME	DIN	JIS
Rating	B16.34 Class 150 B16.34 Class 300	DIN 3357 PN10 - PN40 EN 12516-1	B2001 10K B2001 20K
Face to Face	B16.10	DIN 3202 F4 / F18 DIN 3202 F1 / F17 EN 558 Series28 / Series27	B2002 10K Form 6 B2002 20K Form 10
Connection Facing	B16.5RF serrated Finish (AARH200 or Ra. 6.3 um)	DIN EN1092-1	B2220 10K B2220 20K
Inspection & Testing	API 598	DIN 3230/3, EN 12266-1	JIS B2003
Quality Assurance	ISO 9001, API 6D AD 2000 - Merkblatt W0 PED 2014/68/EU CE0036	ISO 9001, API 6D AD 2000 - Merkblatt W0 PED 2014/68/EU CE0036	ISO 9001, API 6D AD 2000 - Merkblatt W0 PED 2014/68/EU CE0036

AVAILABLE OPTIONS

- Other Alloy are Available
- Casting per NACE/MR - 01 - 75 for Sour Gas Service.
- Inspection Certificate according to EN 10204 3.2 Form



MATERIALS

NO.	PART NAME	MATERIALS		
		ANSI	ANSI	ANSI
1	Body	A351 - CF8M	A351 - CF8	A216 - WCB
2	End Cap	A351 - CF8M	A351 - CF8	A216 - WCB
3	Ball	A351 - CF8M	A351 - CF8	
4	Ball Seat		TFM1600 / PTFE / RTFE	
5	Body Gasket		PTFE / 316 SPIRAL WOUND+GRAPHITE*	
6	Bolting	A193-B8		A193-B7
7	Bolt Nut	A194-8		A194-2H
8	Stem	316		304
9	Anti-Static Device	316		304
10	Thrust Washer		PTFE	
11	O-Ring		FKM	
12	Stem Packing		PTFE / GRAPHITE*	
13	Bushing		50%SS+50%PTFE / 304*	
14	Gland		316	
15	Belleville Washer		301	
16	Stem Nut		A194 - 8	
17	Stop-lock-cap		304	
18	Lever Nut (1/2 ~ 2 1/2)		A194 - 8	
19	Lever Sleeve (1/2 ~ 2 1/2)		VINYL PLASTIC	
20	Lever (1/2 ~ 2 1/2)		304	
21	Lock Device (1/2 ~ 2 1/2)		304	
22	Stop Bolt		A2-70	
23	Pipe Handle (3 ~ 4)		A53+Zn PLATED	
24	Handle Adapter (3 ~ 4)		A351 - CF8	
25	Set Screw (3 ~ 4)		A193 - B8	
26	Snap Ring (3 ~ 4)		304	
27	Triangle Stopper (3 ~ 4)		304	
28	Nameplate		304	
29	Bearing		304	

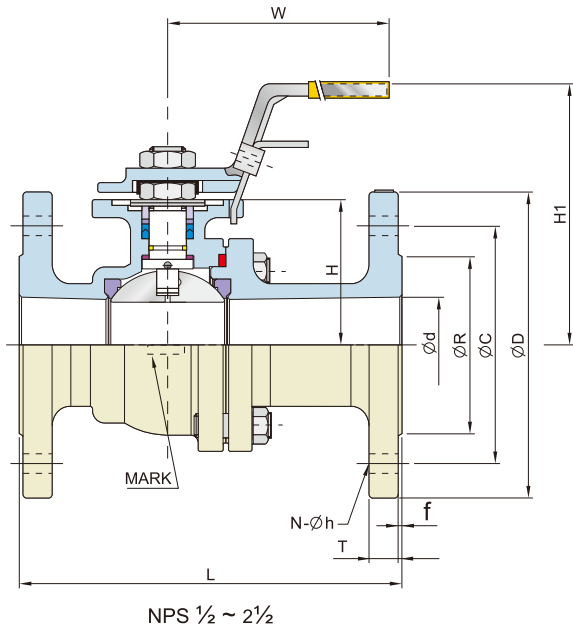
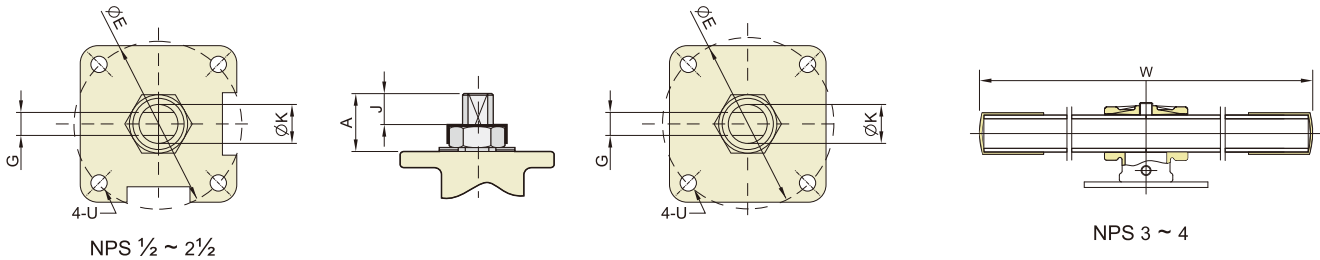
*Materials for KV-060 Series (Fire-Safe Models)

DESIGN FEATURES:

- Built-in ISO 5211 Mounting Pad for Easy Automation
- **Fire Safe** Design Approved
-  Anti-Static Devices for Ball-Stem-Body
- Blow-out Proof Stem
- Pressure Balance Hole in Ball Slot
- **TA-LUFT** **ISO15848-1** Design Approved
- Casting Boss on Body for Draining

APPLICABLE STANDARDS:

- Design : ASME B16.34
- Fire Safe : API 607 5th2005, ISO 10497
- Face to Face : ASME B16.10
- Wall Thickness : ASME B16.34
- Flanged Ends : ASME B16.5
- Inspection & Testing : API 598



ASME Class 150

KV-041, KV-061

Unit: mm

NPS	d	L	R	D	C	f	T	H	H1	N	h	W	G	A	J	K	U	E	ISO 5211
1/2	15.0	108	35.0	90	60.3	2	8.0	37.0	87	4	16	135	6.3	20	10	12	M5	42	F04
3/4	20.0	117	43.0	100	69.9	2	8.9	40.0	90	4	16	135	6.3	20	10	12	M5	42	F04
1	25.0	127	51.0	110	79.4	2	9.6	46.0	98	4	16	170	9.0	24	11	15	M6	50	F05
1 1/4	32.0	140	63.5	115	88.9	2	11.2	50.0	102	4	16	170	9.0	24	11	15	M6	50	F05
1 1/2	38.0	165	73.2	125	98.4	2	12.7	62.0	114	4	16	200	9.6	27	16	16	M8	70	F07
2	50.0	178	92.0	150	120.7	2	14.3	71.0	127	4	19	200	9.6	27	16	16	M8	70	F07
2 1/2	63.5	190	105.0	180	139.7	2	15.9	89.0	154	4	19	252	16.0	43	21	24	M10	102	F10
3	76.0	203	127.0	190	152.4	2	17.5	100.0	185	4	19	300	16.0	43	21	24	M10	102	F10
4	100.0	229	157.2	230	190.5	2	22.3	120.5	216	8	19	400	18.0	50	25	29	M10	102	F10

ASME Class 300

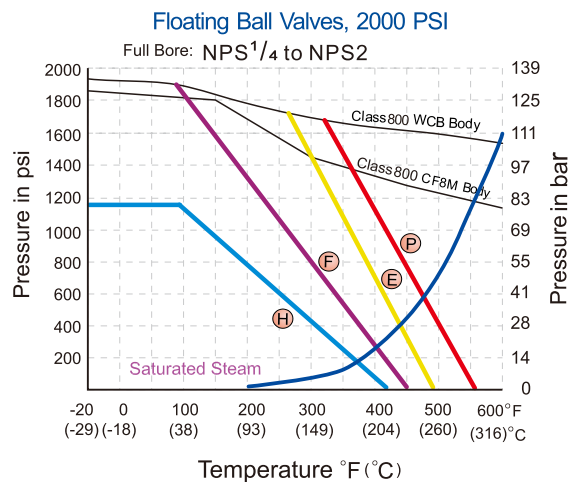
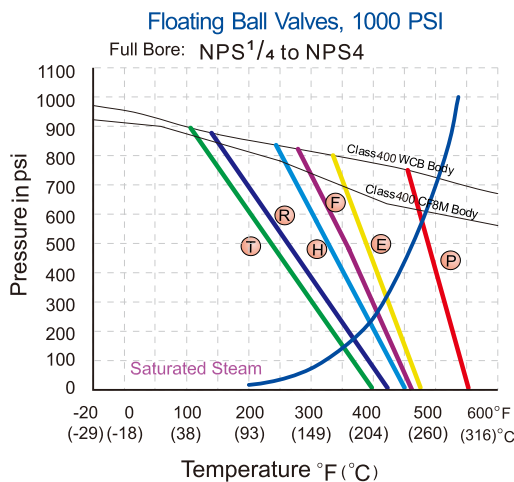
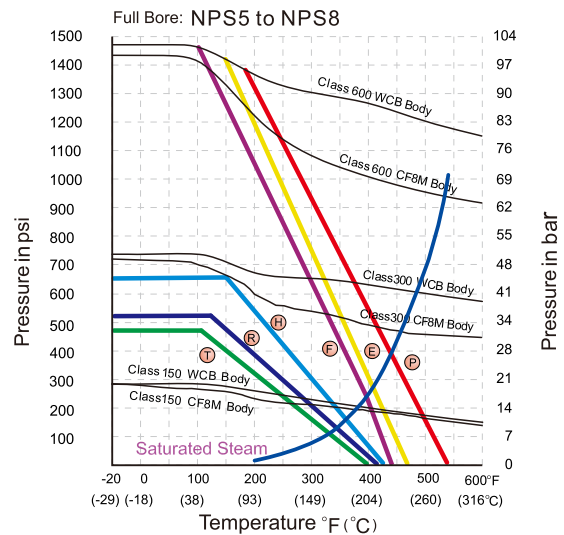
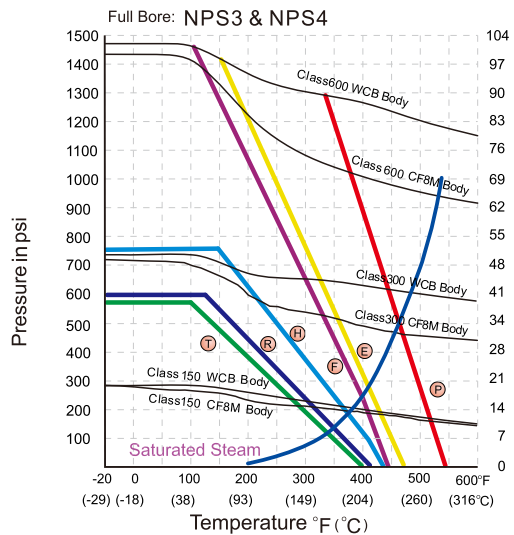
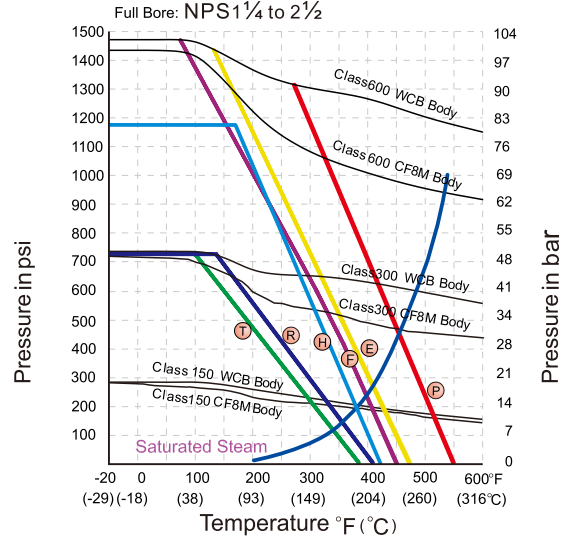
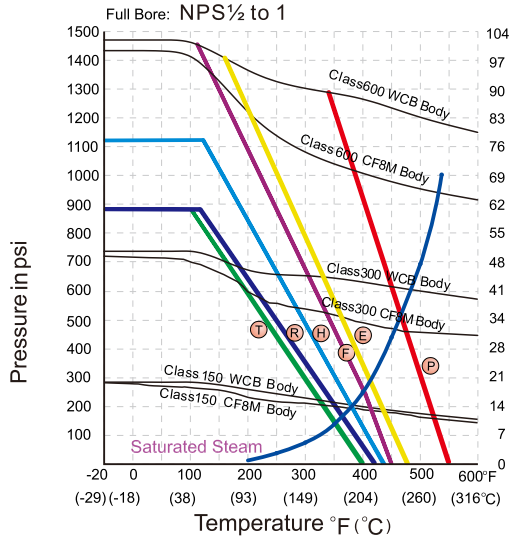
KV-042, KV-062

Unit: mm

NPS	d	L	R	D	C	f	T	H	H1	N	h	W	G	A	J	K	U	E	ISO 5211
1/2	15.0	140	35.0	95	66.7	2	12.7	37	87	4	16.0	135	6.3	20	10	12	M5	42	F04
3/4	20.0	152	43.0	115	82.6	2	14.3	40	90	4	19.0	135	6.3	20	10	12	M5	42	F04
1	25.0	165	51.0	125	88.9	2	15.9	46	98	4	19.0	170	9.0	24	11	15	M6	50	F05
1 1/4	32.0	178	63.5	135	98.4	2	17.5	50	102	4	19.0	170	9.0	24	11	15	M6	50	F05
1 1/2	38.0	190	73.2	155	114.3	2	19.1	62	114	4	22.3	200	9.6	27	16	16	M8	70	F07
2	50.0	216	92.0	165	127.0	2	20.7	71	127	8	19.0	200	9.6	27	16	16	M8	70	F07
2 1/2	63.5	241	104.7	190	149.2	2	23.9	89	154	8	22.3	252	16.0	43	21	24	M10	102	F10
3	76.0	282	127.0	210	168.3	2	27.0	100	185	8	22.3	300	16.0	43	21	24	M10	102	F10
4	100.0	305	157.0	255	200.0	2	30.2	121	216	8	22.3	400	18.0	50	25	29	M10	102	F10

The pressure-temperature data of ball valves is determined not only by valve shell materials but also by sealing materials used for ball seats, gland packings and flange gaskets.

Floating Ball Valves, Class 150 / 300 / 600



Seat Materials: T=PTFE R=RTFE H=TFM1600 E=EK+PTFE P=PEEK F=TFM4215
“H” is the standard seat material for KI ball valves, except KV-010, 020 & 030 series.
The seat material of these types is PTFE.

Body Ratings: Shown above are for ASTM A351 Gr.CF8M and A216 Gr.WCB
For ratings of other valve shell materials, please refer to the last edition of ASME B16.34.